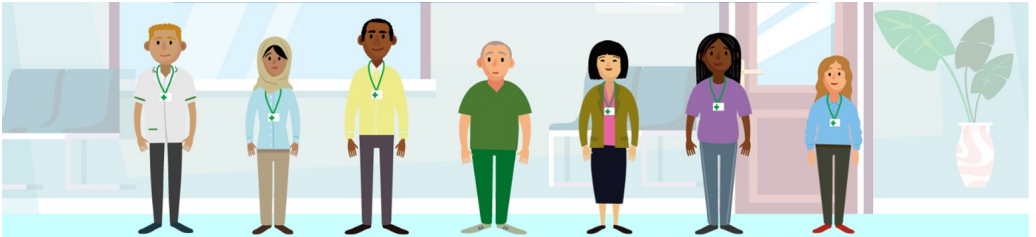




Joined Up Care Derbyshire

Your first steps towards a career in Health & Social Care

A short guide for care experienced young people



The Derbyshire
VCSE sector
Alliance



Derby City Council



The Joined Up Care Derbyshire Offer

Careers at Joined Up Care Derbyshire works in partnership with health organisations and local authorities to support the current and future workforce in system-wide initiatives and the priorities set out in the Interim People Plan. This includes workforce development, recruitment and retention as well as promoting career and employment opportunities throughout the city and county.



Stage 1 An introduction and welcome to Joined Up Care Derbyshire

An opportunity to meet the Careers team and to develop an understanding of the opportunities and pathways into 350 different health and social care roles. A bespoke approach offering one-to-one coaching sessions (and or small group workshops) to understand areas of interest and to co-design a tailor-made support plan

Stage 2 Employability support

Personalised approach to employability provision including application writing and interview skills

Stage 3 Work Experience

- Guaranteed access to Joined Up Care Derbyshire Virtual Work Experience Programme
- Insight opportunities informal discussions with professional experts
- Tour of a department/shadowing for a day/ simulation exercises
- In-person work experience placements

Stage 4 Guaranteed Interviews

Guaranteed interviews for entry level roles where the minimum essential criteria is met

Some of the employers included in our programme are:

Chesterfield Royal Hospital - an acute Trust providing healthcare and community services for more than 400,000 people across Derbyshire.

Derbyshire Community Health Services (DCHS) – A community NHS Trust caring for patients across a wide range of services, increasingly delivering care in patients’ own homes as well as 11 community hospitals and more than 30 health centres across Derbyshire. They employ approximately 4,300 staff, making them one of the largest providers of specialist community health services in the country, serving a patient population of more than one million.

Derbyshire Healthcare – A provider of NHS mental health, learning disabilities and substance misuse (drug and alcohol) services in Derby city and Derbyshire county. They also provide a wide range of children’s services and employ more than 2,800 staff providing services from a number of community bases across the whole of Derbyshire. Across the county and the city, they serve a combined population of approximately one million people.

University Hospitals of Derby & Burton (UHDB) – a large acute Trust providing hospital services across Royal Derby Hospital, Queen’s Hospital Burton, Florence Nightingale Community Hospital, Samuel Johnson Community Hospital & Sir Robert Peel Community Hospital. UHDB are our largest NHS employer with over 12,000 staff.

Derby City Council – Just over 6,000 people work for the Council, making it one of the largest employers in the city. The jobs they do range from social work to teaching Derby's children to engineering, lawyers, surveyors and environmental health officers. The Council is currently split into three directorates and is led by Chief Executive Paul Simpson.

Derbyshire County Council – They work with communities to ensure services meet their environment, education, social, family, leisure, transport and economic needs and expectations. More than 18,000 people work for the council in places throughout the county, each with their own individual talents and abilities. The council is divided into 4 strategic directorates, responsible for the following areas: Adult Social Care and Health; Childrens Services; Corporate Services and Transformation; and Place.

DHU Healthcare – A 'not for profit' community interest company providing a diverse range of services including urgent and emergency care, primary care, out-of-hours services and NHS111. Operating 365 days a year, 24 hours a day, they cover a population of almost ten million people across the East Midlands and beyond.

East Midlands Ambulance Service – provide emergency 999 care and telephone clinical assessment services for a population of 4.8 million people. They employ over 4000 people and cover the areas of Derbyshire, Leicestershire, Rutland, Lincolnshire (including North and North East Lincolnshire), Northamptonshire and Nottinghamshire.

Integrated Care Board – responsible for coordinating health and social care across Derby and Derbyshire, bringing together NHS bodies, local authorities and voluntary sector organisations to deliver better care for our whole community.

Entry Level Roles and Potential Progression examples:

Healthcare Assistant



Registered Nurse



Digital Support Technician



Network Engineer



Entry Level Roles and Potential Progression examples:

Apprentice Clinical Support Worker



Operating Department Practitioner



Catering Assistant



Dietitian



There are over 350 different job roles in Health and Social Care, including:

- **Care Workers & Senior Care Practitioners**
- **Social Workers**
- **Allied Health Professions (AHPs)**
- **Medical Roles**
- **Corporate Support**
- **Managerial and Leadership Roles**
- **Estates and Facilities Professions**

Care Worker/Support Worker – this could be in a variety of settings for example in a care home, at someone’s home or in the community. Supporting people with their social and physical activities such as eating and drinking, attending appointments, shopping, washing and dressing.

Healthcare Support Worker/Healthcare Assistant – you could work in many different areas; hospitals, GP practices, people’s own homes or the community. You could support registered professionals to look after different patient groups of any age, including those receiving acute care, with learning disabilities, mental health conditions, in therapy or maternity services.

Physiotherapist — Physiotherapists help restore movement and function when someone is affected by injury, illness or disability.

Administration – Administration Assistant, Receptionist, Health Records staff are just a few of the roles you might do, in many different departments. Duties could include filing, inputting data, answering the telephone, collecting and storing files and greeting patients.

Porter – Porters ensure crucial items and goods are delivered where they are needed most, and they ensure patients are in the right place at the right time. You could be moving patients on trolleys, stores and equipment, blood samples, linen, post/parcels, waste, gas cylinders, trolleys of food and drink.

Communications Assistant – Communications staff usually work as part of a team, duties could include running campaigns including digital, websites, social media, intranets and online videos. Communications and Public Relations staff need to be creative and have an eye for detail.

Occupational Therapist — Occupational Therapists help people overcome challenges, completing everyday tasks or activities (occupations), so they can live their best life at home, at work and everywhere else.

Catering - roles include preparing and delivering meals to patients, serving food and maintaining high standards in the kitchen. More senior roles range from running catering departments to a trust's entire catering service.

Nurse — Nurses are a crucial part of the health and social care team. They work in every sort of health and social care setting from accident and emergency to patients' homes, with people of all ages and backgrounds. Healthcare Support roles are a great entry position prior to studying to become a nurse.

Midwife — Midwives are the lead professionals in the care and management of pregnancy and birth. They are instrumental in providing care to women and families with complex medical, obstetric, and social needs as part of the wider multi-professional team. Midwives working in the community could be providing services in women's homes, local clinics, children's centres and GP surgeries.

Phlebotomist — Phlebotomists take blood samples from patients which are examined in a laboratory and the results can be used to quickly diagnose diseases and conditions. Patients may be nervous about having their blood taken, so you have to reassure them and put them at ease. Phlebotomists may work in hospitals, clinics or health centres. You may visit patients at home or in residential or care homes.

Estate Technician — Estate technicians test and maintain vital specialist equipment, such as sterilisers, fire alarms and intruder alarms. In an emergency, you might be called out to a patient's home to test or repair an essential medical device.

Social Worker — Social workers offer support, counselling and advocacy to individuals and families, and intervene when vulnerable people need safeguarding support. Social Workers support a variety of people including older people, those with learning disabilities, physical disabilities, and mental health conditions such as depression, anxiety, schizophrenia and personality disorders. Social Workers also work in Child Protection, Fostering, Disabled Children, Youth Justice and Leaving Care.

Pharmacist — Pharmacists are helping people live longer and healthier lives by providing a safe use of medicines and excellent healthcare advice. Pharmacists can lead the pharmacy team and work with patients, members of the public and healthcare professionals to advise on the most effective treatments for certain conditions and how to use medicines safely and effectively.

Pharmacy Technicians can lead the pharmacy team and work with patients and members of the public and healthcare professionals.

Pharmacy Support Staff perform a variety of roles, for example, dispensing medicines, or being involved in the manufacturing of medicines and ordering items for wards in a hospital.

Training for all of our roles will be provided and you will have the opportunity to attend short courses and you may have the opportunity to get a qualification by doing an apprenticeship.

Apprenticeships

An apprenticeship is a paid job where you will learn and gain valuable skills and experience to perform in the role.

Alongside the on-the-job training, as an apprentice you will spend at least 6 of your working hours completing classroom / theory-based learning with a college, university or training provider which on completion will gain a nationally recognised qualification.

An apprenticeship with us in Health and Social Care in Derbyshire includes:

- Paid employment with holiday entitlement
- Hands on experience supported by experienced colleagues in the profession
- A minimum of 6 hours a week off the job for learning that supports the theory element and knowledge in your role area. Formal assessment leading to a nationally recognised qualification
- Support to gain/develop your functional maths and English skills if required
- Opportunity to apply for permanent positions within the Derbyshire health and social care sector

Who is an Apprenticeship for?

Apprenticeships are available to anyone over the age of 16, for higher level apprenticeships the minimum age is 18 due to the entry requirements needed to study, apprenticeships are suitable for people:

- Early in their career / first job
- Looking to upskill, develop and enhance in their current job
- Seeking a career change
- Not in full time education

In Health and Social Care, there are apprenticeships in:

- **Adult Care Work**
- **Nursing**
- **Physiotherapy and Occupational Therapy**
- **Pharmacy**
- **Administration and Management**
- **Domestic, Cleaning and Catering**
- **Plumbing, Carpentry and Engineering**
- **Customer service and project management**
- **IT and Data**

More information about apprenticeships are available at:
<https://haso.skillsforhealth.org.uk/standards/>

How to apply

There are lots of apprenticeship opportunities within the NHS and Social Care in Derbyshire.

Each organisation will advertise their opportunities along with their job vacancies – you can find links to these on this website:

<https://joinedupcareers.co.uk/vacancies>

Apprenticeships are also advertised on the national Government website:

www.gov.uk/apply-apprenticeship

Where are you now?

Here are some suggestions to help you on your path:

What are you doing at the moment?	What could you do next?	Who can help?
<p>Studying GCSEs?</p>	<p>Check what your likely exam grades/results will be.</p> <p>Explore routes into your chosen career. Will you need a degree or other qualifications or will Health and Social Care train you on-the-job?</p> <p>Are there particular skills or experience that will improve your chances?</p> <p>Enquire about volunteering or work experience.</p> <p>Find out if you need any specific A levels or equivalent qualifications.</p>	<p>Subject Teachers</p> <p>Your careers adviser</p> <p>Health and Social Care</p> <p>Professional Bodies</p> <p>Apprenticeship website</p>
<p>Studying for A levels or another course at your school or local college</p>	<p>GCSEs plus: If you need to study a particular degree, investigate which universities offer it.</p> <p>Investigate any further qualifications you might need for your chosen role.</p>	<p>Subject Teachers</p> <p>Your careers adviser</p> <p>UCAS</p> <p>Health and Social Care</p> <p>Professional Bodies</p> <p>NHS Jobs</p> <p>National Careers Service</p>
<p>At university</p>	<p>A levels plus: It is vital to check which qualifications are preferred by your favourite institute of higher education.</p>	<p>University careers service</p> <p>Health and Social Care</p> <p>Professional Bodies</p> <p>NHS Jobs</p>
<p>Looking for a new career</p>	<p>A levels plus: Find out if you will need to retrain before you apply for new roles or if Health and Social Care will train you while you're working.</p>	<p>Careers Service (You may have to pay for this service)</p> <p>Professional Bodies</p> <p>Jobcentre Plus</p> <p>UCAS</p> <p>National Careers Service</p>

Useful Links

- www.nhscareers.nhs.uk
- www.skillsforcare.org.uk/Careers-in-care/job-roles
- www.stepintothenhs.nhs.uk
- www.hcpc-uk.co.uk
- www.nmc.org.uk
- www.gmc-uk.org
- www.joinedupcareers.co.uk
- www.derbyshire.gov.uk/working-for-us/jobs/careers-service/careers-service.aspx
- www.jobs.derbyshire.gov.uk
- www.derby.gov.uk/jobs-and-careers/
- www.derby.gov.uk/jobs-and-careers/careers-advice/



Contact us

Careers

Joined Up Care Derbyshire

Email:

ddicb.joinedupcareers@nhs.net

Further information and current vacancies can be found on our website:



www.joinedupcareers.co.uk

For our latest news, vacancies and programmes, follow us on our Social Media:



TikTok